

Moving from Practice to Theory:

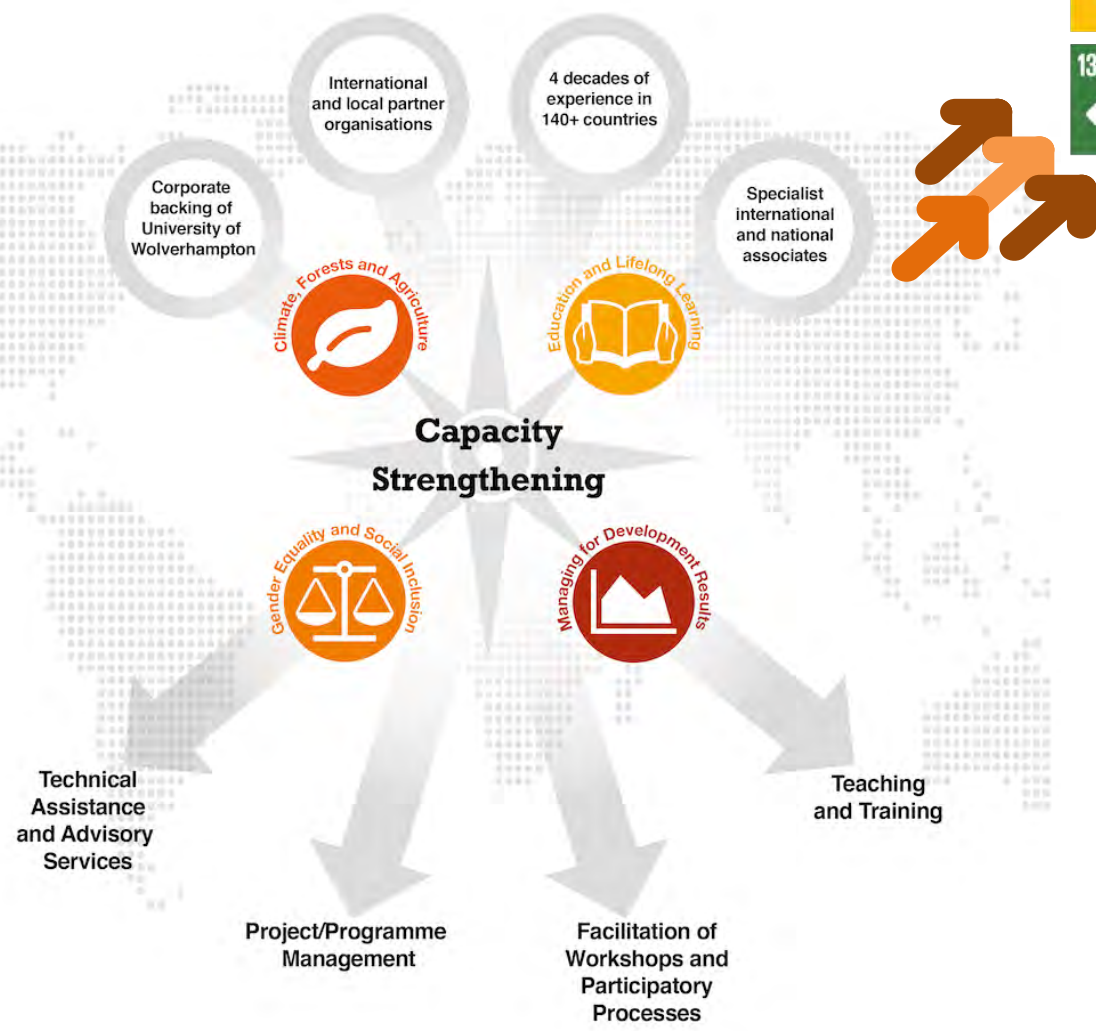
*The Centre for International Development and
Training (CIDT)*

ANNUAL RESEARCH CONFERENCE
2017



THE GLOBAL GOALS

For Sustainable Development



WHAT IS OUR CAPABILITY?

Our partnership vision for this programme is based on our long global track record with 'Green Growth' programmes



Global Forests Governance
Markets and Climate
DFID 2011-15, £2.3m



Forestry Gender
Programmes
1989-04



EVALUATIONS:
Climate Change Africa Research, 2011-12
International Climate Finance, 2013-14



Cameroon
Programme
1986-2017



Strengthening Africa
Forest Governance
EU/DFID 2011-15, £2.2m



Congo Championing Forest
Peoples Rights and
Participation, EU/DFID, £2.1m



University of Federal
Amazonia, Brazil
DFID/GoB, 1995-8, £3.2m



Citizen Voices
4 Change (CV4C)
EU, 2017-20, £5m



FONERWA Rwanda
DFID/CDKN/GoR
2011-17, £3.3m



Nepal Livelihoods &
Forestry Programme
DFID, 2008-12, £14.6m
Global Green Growth
Institute, 2016-17

Indonesia Tropical
Forestry Management
Programme
DFID, 1991-5

India Forestry
Programmes
DFID/GoI, 1991-8

Malawi
Programmes
1978-9 & 2004-8

Kenya
KIFCON
1995-96

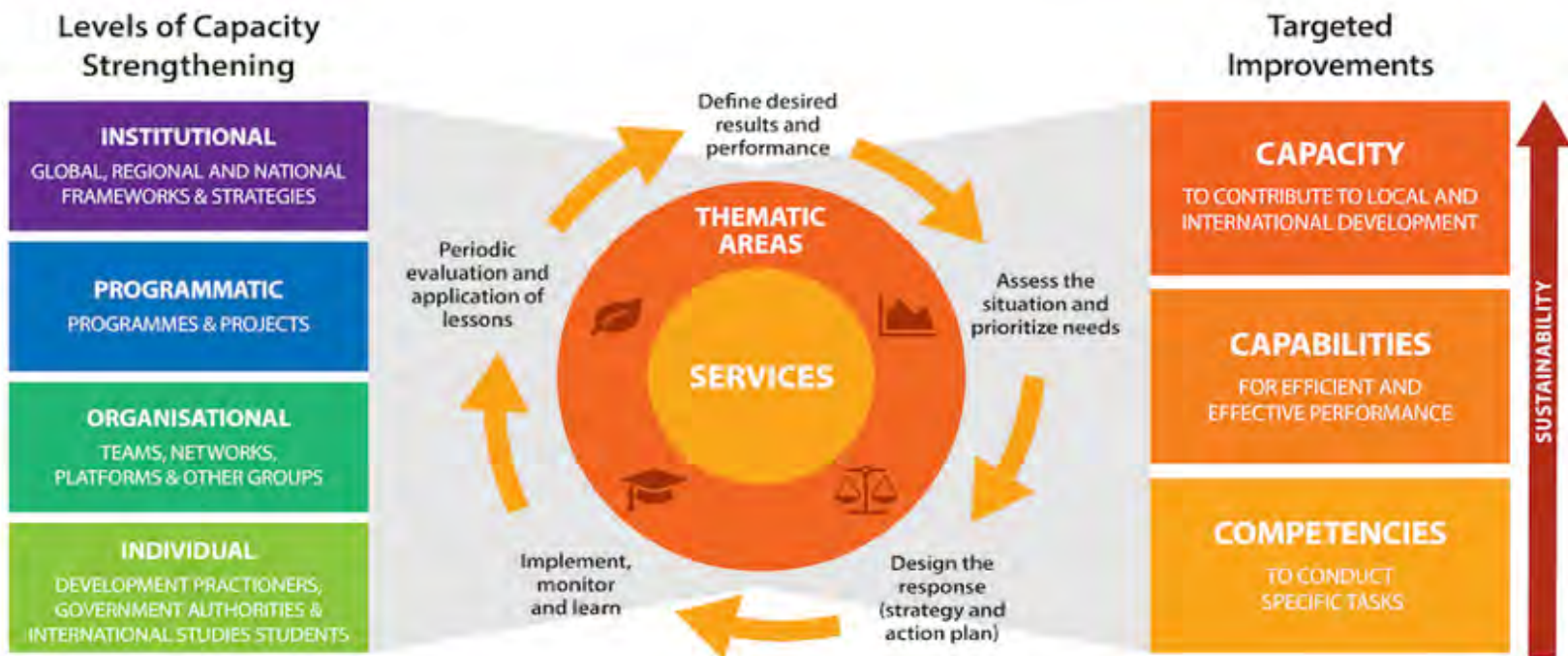
Papua New Guinea
Land Use Planning
1980-3



"We are not making a choice between environment and prosperity. We are rather looking at how do we combine both because one supports the other... We need to move beyond debate and focus on implementation... If Rwanda can do it, anyone can do it!"

President Paul Kagame of Rwanda who spoke at the World Economic Forum (WEF) annual summit in Davos, Switzerland 2015.

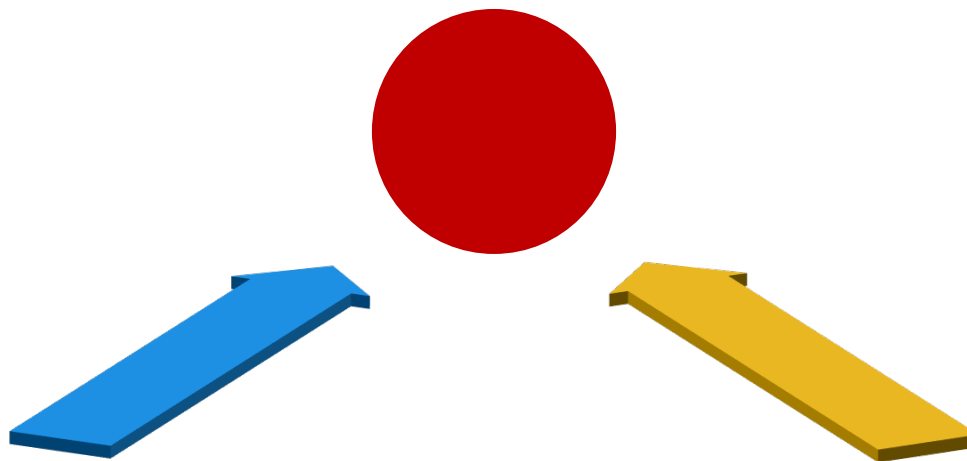
Our Model for Capacity Strengthening



Moving from Practice to Research

Vision:

To be a Centre of Excellence for capacity strengthening for the development sector



Use existing resources

Convert existing data/reports into academic work

Integrate a research approach
Imbue a culture of research
into our work

Research themes



- Partnerships
- Political economy of forest governance
- Politics of green growth in Africa
- Impact of capacity development
- Learning in organisations

Challenges and Risks

- Income generation
- Intellectual property- our clients own the data
- Capability in-house
- Investment in time and effort
- Ethical considerations

Thank you